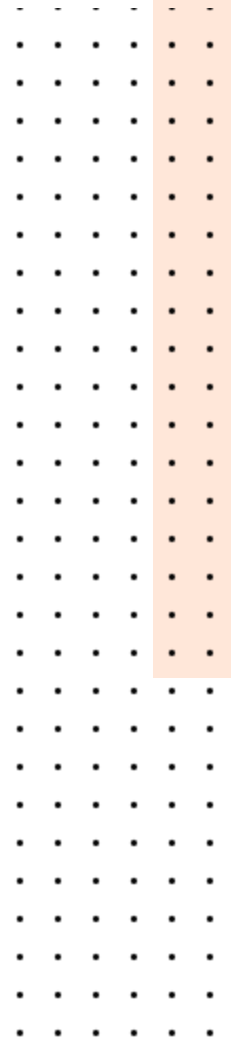
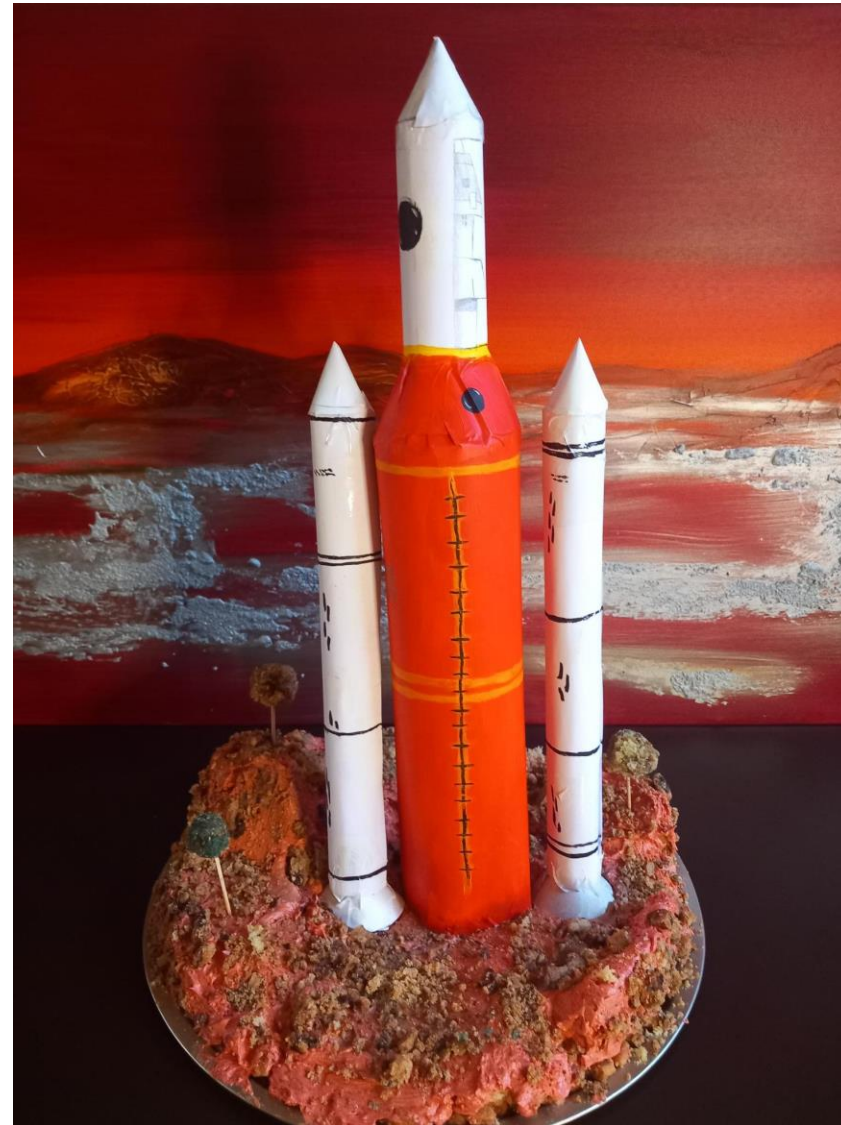
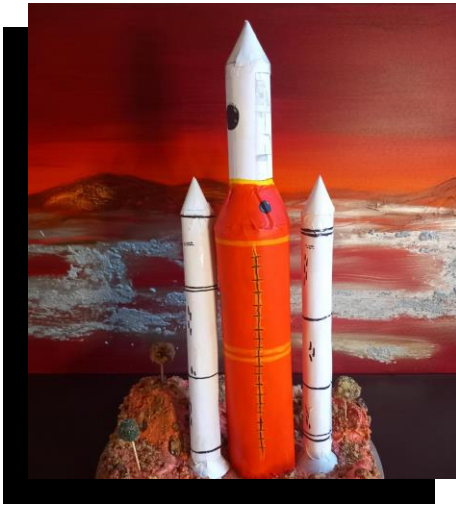


COSMIC CONFECTION

**FUELLING OUR PLANETARY
PASSION**





OUR PLANETARY PASSIONS

We combined our love of baking and art, and passion for aerospace, into our vision of a rocket on Mars. We believe our model embodies and illustrates what links all these fields: physics.



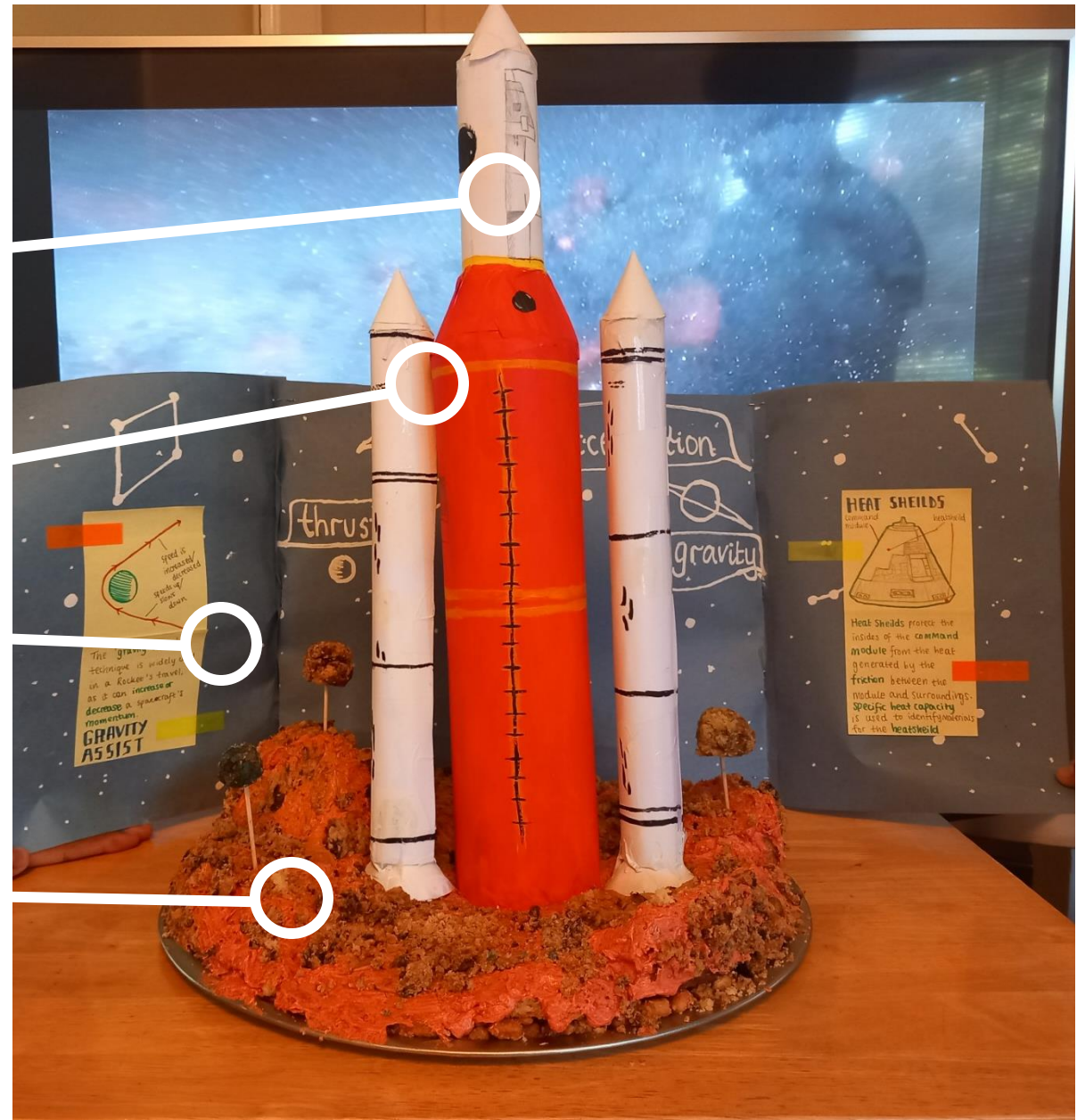
ANATOMY OF OUR MODEL

Detailed cross-section showing the internal mechanics of the top of the rocket

Hand-made rocket body, alongside two rocket boosters, comprising of paper and paint.

A space backdrop featuring summaries of how physics drives gravity assist and enables heatshields to function.

The baked planet is formed of a biscuit base, sculpted sponge cake, buttercream icing, and chocolate cookie boulders. The cake-pops, coated in coloured buttercream, represent other planets.





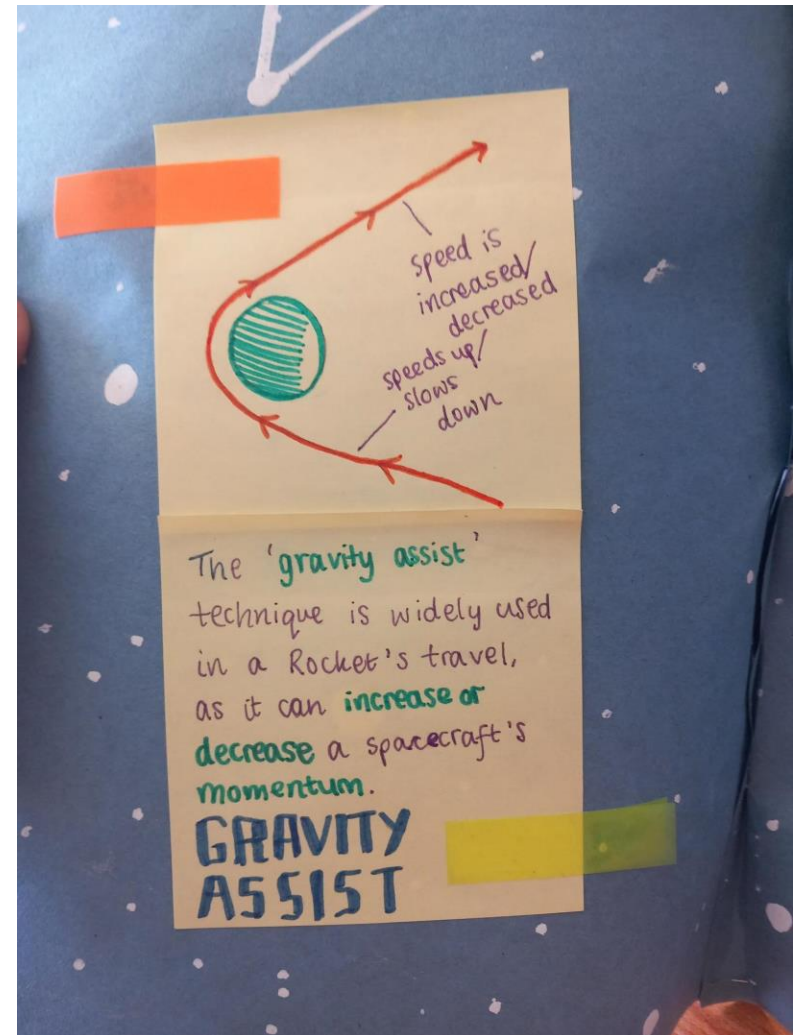
BAKED BASE + MODEL

THE BASE OF THE MODEL DEPICTS THE **MARTIAN TERRAIN**, THROUGH THE MEDIUM OF CAKE AND COOKIES. THE SPONGE WAS SCULPTED INTO PEAKS, VALLEYS AND CRATERS, WITH CAKE POPS AS COLORFUL PLANETS. THE ROCKET, INSPIRED BY THE **ARTEMIS 1**, IS FORMED OF PAPER, CARD AND ACRYLIC PAINT. THE TOP OF THE ROCKET FEATURES A **CROSS-SECTION** REVEALING; THE ORION SPACE CRAFT AND ADAPTOR ; AND THE INTERIM CRYOGENIC PROPULSION STAGE (ICPS).

PHYSICS FUELS OUR PASSION FOR ROCKETS

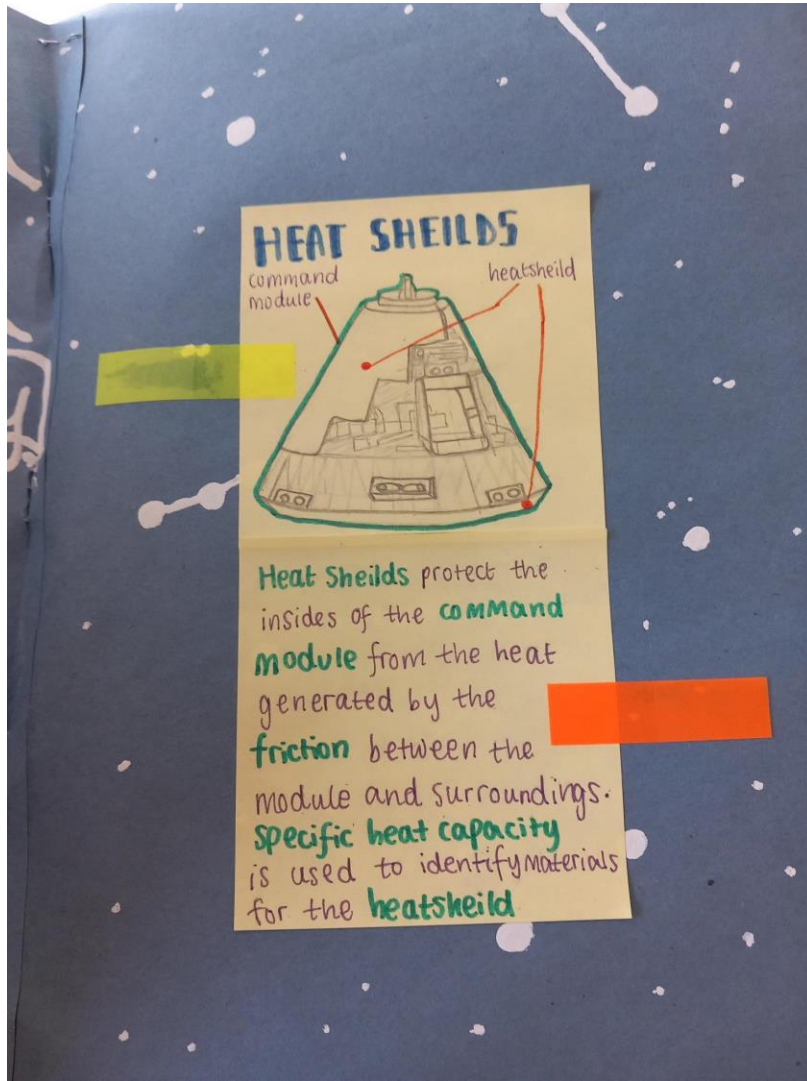
**PHYSICS GUIDES ALMOST EVERY STEP
IN A ROCKET'S JOURNEY**, FROM
CONSTRUCTION TO IN SPACE.

GRAVITY ASSIST IS WIDELY USED
WHEN IN-FLIGHT, AS IT
TAKES ADVANTAGE OF **GRAVITY** TO
**INCREASE OR DECREASE A ROCKET'S
SPEED** BY '**SLINGSHOTTING**' AROUND
MOONS OR PLANETS.



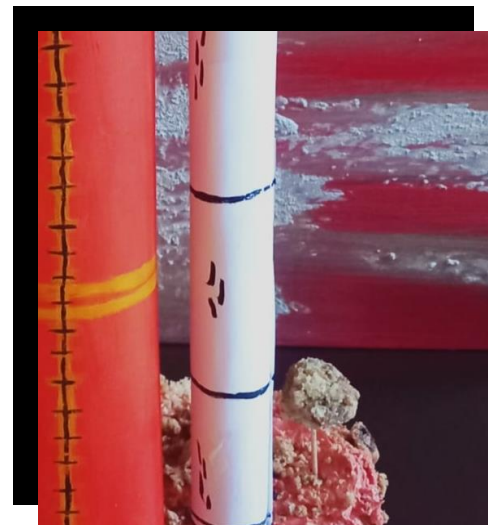
ROCKETS EMBODY PHYSICS

USUALLY USED ON THE **COMMAND MODEL**, HEATSHIELDS **PROTECT** IT FROM BURNING UPON ENTRY INTO THE ATMOSPHERE. THE KNOWLEDGE OF **SPECIFIC HEAT CAPACITY** IS IMPORTANT WHEN **IDENTIFYING SUITABLE MATERIALS**.



OUR ROCKET CLOSE UP

HERE ARE SOME CLOSE
UPS OF OUR ROCKET
MODEL FROM
DIFFERENT ANGLES,
HIGHLIGHTING ITS
DESIGN AND FEATURES.



THANK YOU
FOR
WATCHING!

{COSMIC CONFECTION}